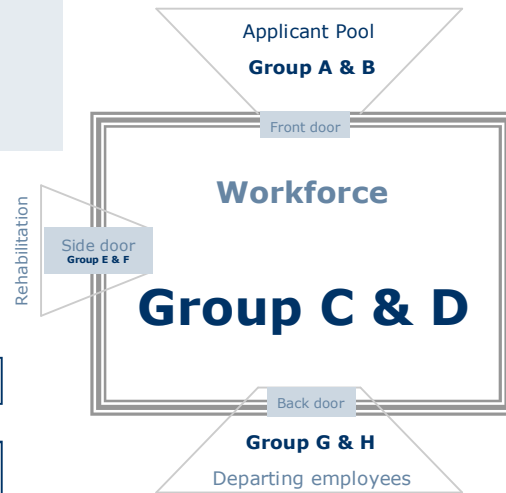


Workforce Health and Safety Screen

Optional Employee Health & Safety

Screen 5
(Ergonomic Screen for
Hand Functionality)



Health & Safety Screen

Screen report is provided to the employee for information

Statistical assessment is provided to management

The Employee Health & Safety screen is recommended for initial workforce application (first 2 years) while establishing ergonomic screens 1-3. The Health and Safety screen is less disruptive to an existing workforce while providing the opportunity to begin identifying and correcting existing and/or developing hand functionality issues within the workforce. Statistical assessment from this Health and Safety screen will be provided to management and employees will be encouraged to seek routine medical support as appropriate.

Our business is the hands of business!



WORK WRIGHT, INC

1235 Birch St, Suite 5, Helena, MT 59601
(406) 449-2120 fax (406) 449-2130
www.WorkWright.net

Ergonomic Screening Hand Functionality

Safe, fast, accurate and cost effective

Who is at Risk?



Work Wright knows!

Developed specifically for application in today's workforce to monitor employee Health & Safety

Our business is the hands of business!

Today the Workforce is Tainted and at Risk

Group Definitions

Group A—New Employee with no identifiable hand functionality issues. Fully qualified to perform the essential elements of the job.

Group B—New Employee. Has or is developing hand functionality issues that could have a bearing on their ability to perform the essential tasks of some positions. The size of this group is estimated to be about 30% of today's applicant pool.

Group C—Current employee with no identifiable hand functionality issues. Fully qualified to perform the essential elements of the job.

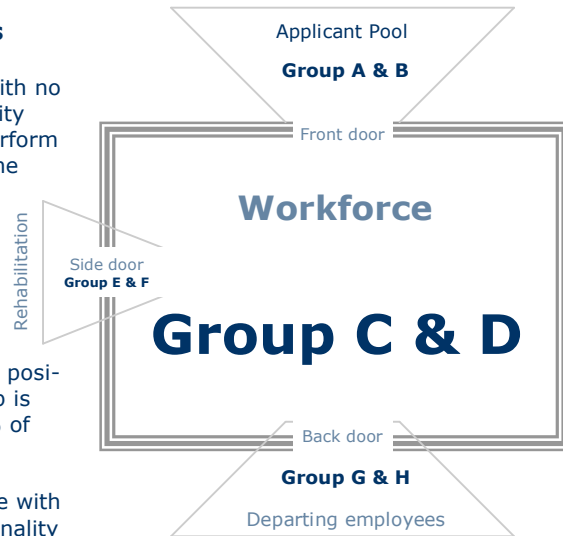
Group D—Current employee. Has or is developing hand functionality issues that could have a bearing on their ability to continue to perform the essential task of some positions. The size of this group is estimated to be about 36% of today's workforce.

Group E—Current employee, returning from hand injury rehabilitation with no identifiable hand functionality issues. Fully qualified to continue to perform the essential elements of the job.

Group F—Current employee, returning from hand injury rehabilitation. Has or is developing hand functionality issues that could have a bearing on their ability to continue to perform the essential task of some positions. The size of this group is estimated to be about 70% of the employees returning from rehabilitation today.

Group G—Departing Employee with no identifiable hand functionality issues.

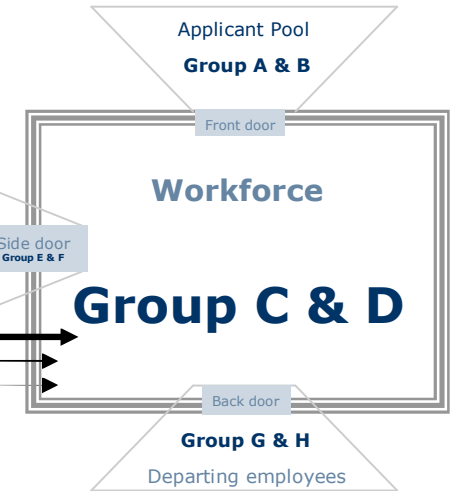
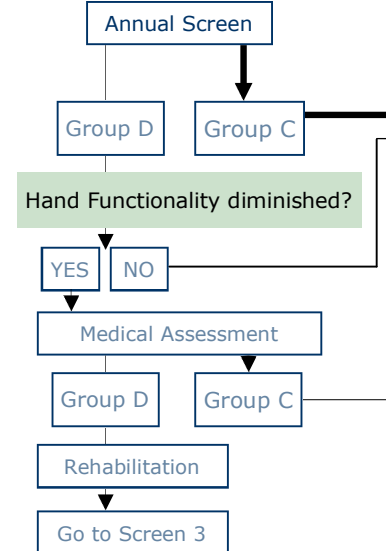
Group H—Departing employee. Has or is developing hand functionality issues that could have a bearing on disability claims and/or litigation. The size of this group is estimated to be about 36% of the employees departing the workplace today.



Step 4

Employee Annual Health & Safety

Screen 4 (Ergonomic Screen for Hand Functionality)

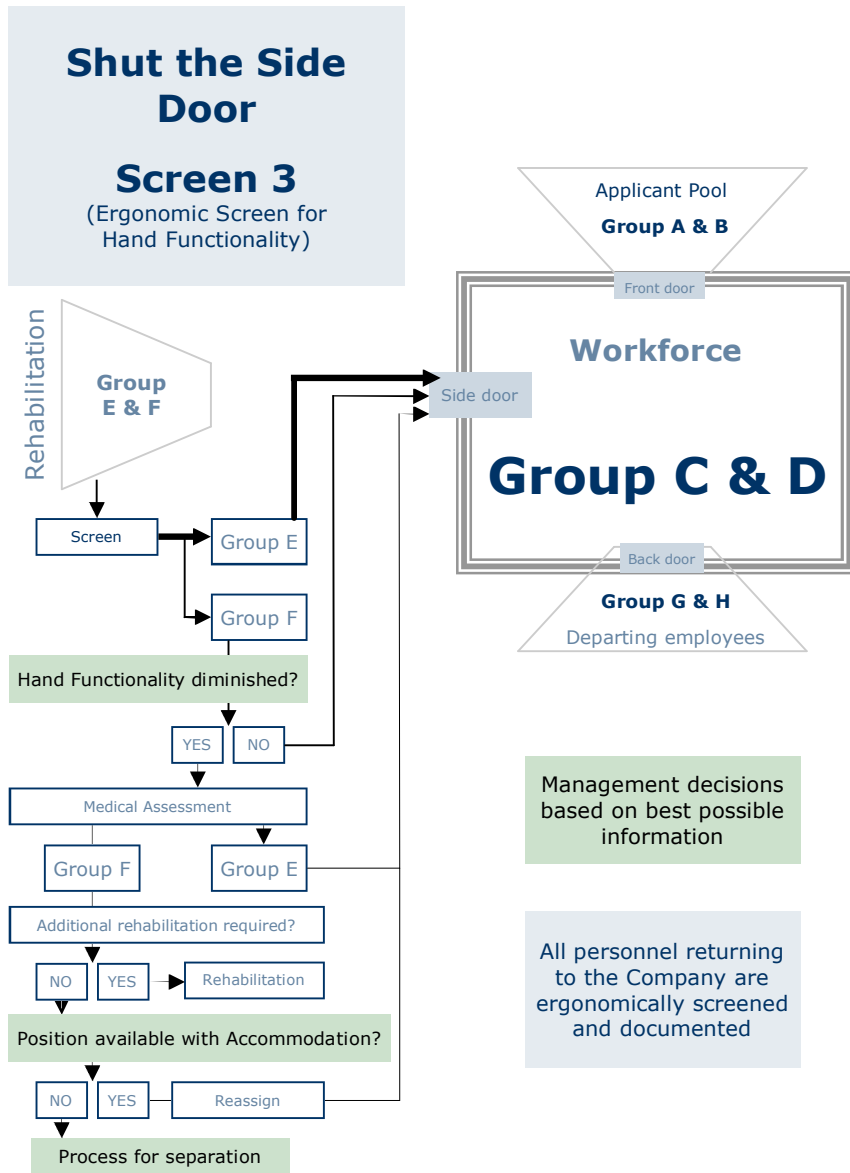


Management decisions based on best possible information

All personnel are ergonomically screened and documented annually

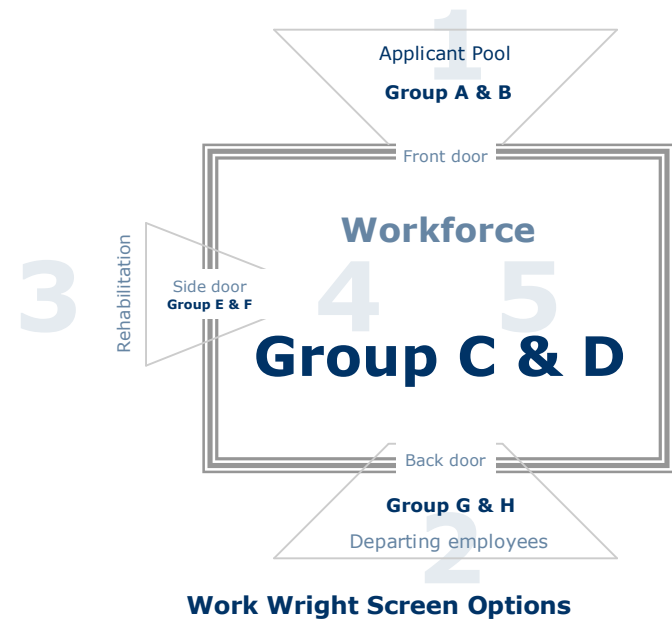
After all the doors are shut and all employees are base lined, meaningful dosimetry can be employed to assess the actual affects of the equipment on the employees. Dosimetry is the final step in eliminating the costly, debilitating effects of hand injuries in the workplace and begins with a statistical assessment of annual screens and the essential elements of the job positions/equipment.

Step 3



Our business is the hands of business!

Improve Employee Health and Safety



Screen 1—Identify and distinguish between Groups A & B. Designed to shut the front door and begin the process of base lining the workforce.

Screen 2—Identify and distinguish between Groups G & H. Designed to shut the back door and document the hand functionality of departing employees. When combined with previous screens during employment, a clear record is established to document the departing employee’s hand functionality.

Screen 3—Identify and distinguish between Groups E & F. Designed to shut the side door and identify potential issues before they become costly debilitating injuries from among that portion of the workforce that has already exhibited indications of injury.

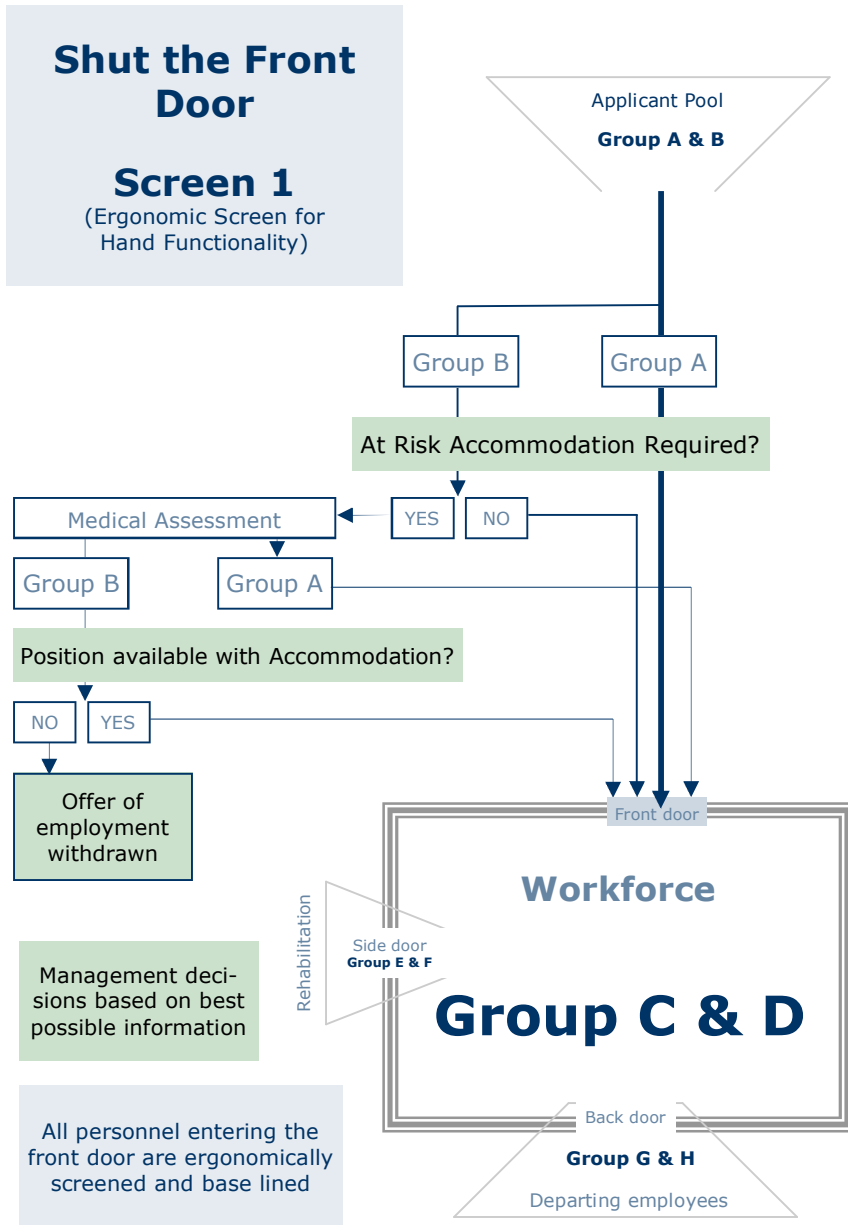
Screen 4—Identify and distinguish between Groups C & D. Designed to bring state of the art ergonomic assessment and early identification of developing hand functionality issues before they become costly debilitating injuries.

Screen 5—Health & Safety screen of the existing workforce on a voluntary basis. Screen results are provided directly to the employee and a statistical assessment of Groups C & D is provided to management.

Once a base line is established (screen 1, 3 and or 4) for an employee, annual screening (Screen 4) is recommended to adequately monitor employee hand functionality.

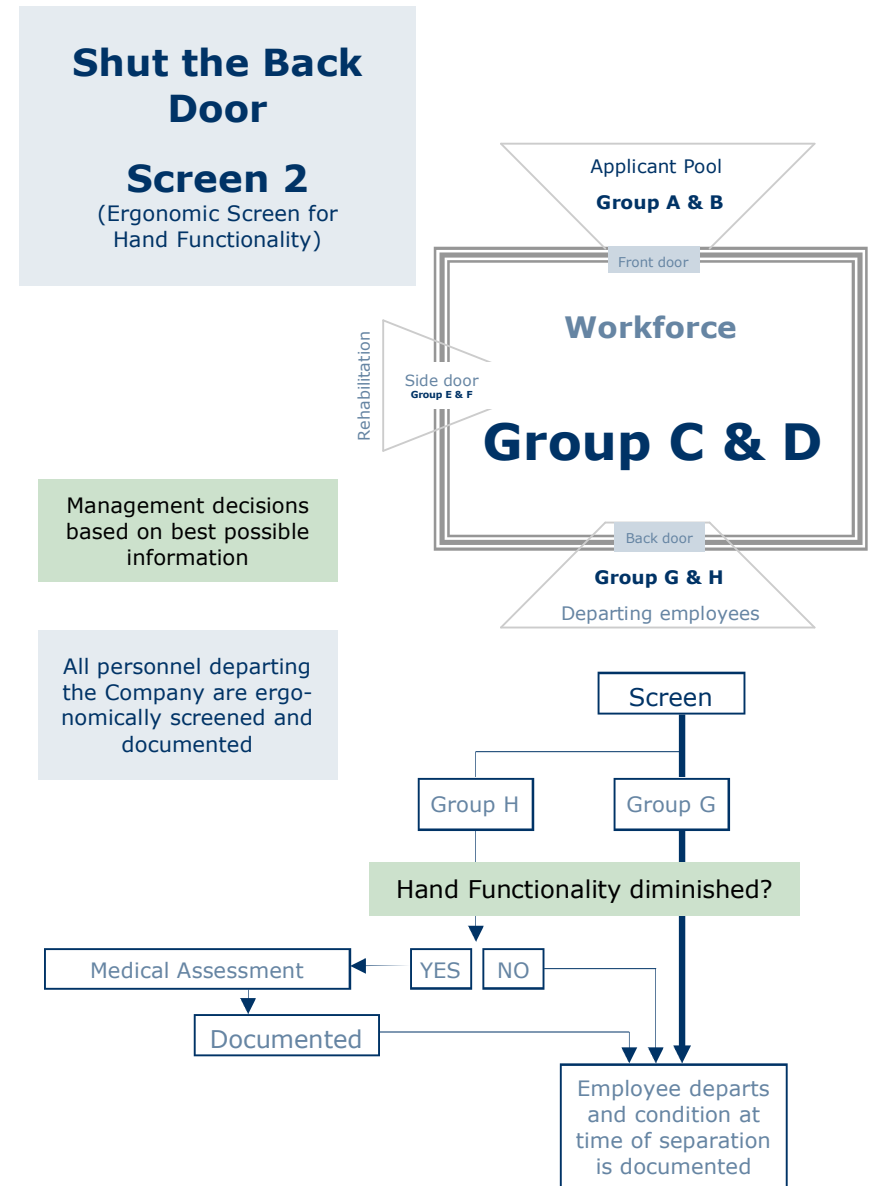
Our business is the hands of business!

Step 1



Our business is the hands of business!

Step 2



Our business is the hands of business!